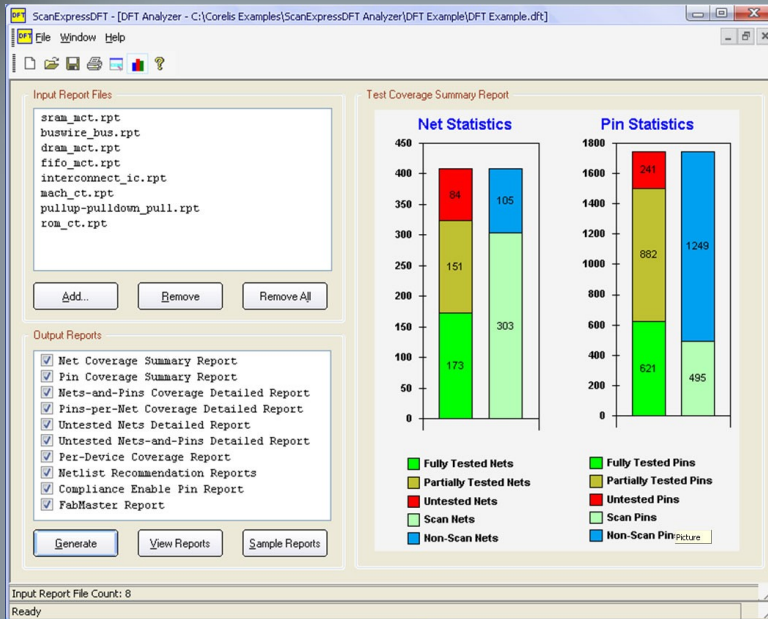


# ScanExpress DFT Analyzer™

**CORELIS**  
An EWA Company

## Boundary-Scan Test Coverage Analysis Tool

Preferred Boundary-Scan Solutions—Acclaimed Technical Support



ScanExpress DFT Analyzer GUI

### Features

- Generates test reports at the device, net, and pin level
- Generates both detailed test reports and test summaries
- Identifies incorrect compliance enable pin states
- Integrated 'Report Browser' interface
- Customizable analysis: include or exclude specific nets, buses, pins and devices
- Exports test coverage data to a spreadsheet or database for integration with other test equipment reports
- Produces Fabmaster compatible reports that help eliminate test pads for fixture based testers resulting in:
  - Reduced test fixture cost
  - Reduced test fixture size and complexity
  - Reduced test fixture design and manufacturing schedule

### Benefits

- Establish exact boundary-scan test coverage
- Prepare test coverage reports for management
- Reduce the number of PCB test points
- Find test holes and deficiencies
- Increase fault coverage
- Reduce test procedure development time

Test coverage statistics provide engineers and managers valuable information to make critical decisions in product development and manufacturing.

ScanExpress DFT Analyzer is an automatic test coverage analysis tool for printed circuit boards and systems that include a mix of boundary-scan and non-boundary-scan devices. The tool assists design and test engineers to increase fault coverage and reduce boundary-scan test procedure development times. Using ScanExpress DFT Analyzer results in better informed test decisions.

Ideally ScanExpress DFT Analyzer is used after schematic capture and before PCB CAD layout. At this stage of product development, the tool creates a comprehensive set of test coverage reports that identifies all nets, pins, and devices, classifying them as completely tested, partially tested, and not-tested.

### Applications

- **Design Engineers** - Able to establish and validate board test coverage before committing to layout
- **Test Engineers** - Are better informed to create more complete test procedures
- **Design and Test Engineers** - Increase fault coverage and reduce boundary-scan test program development time by identifying fault coverage limitations.

### Ordering Information

Part Number - 20300

### CORELIS

13100 Alondra Blvd.  
Cerritos, CA 90703, USA  
Phone: +1 562-926-6727  
Fax: +1 562-404-6196  
[www.corelis.com](http://www.corelis.com)

**Learn More:** For more information about Corelis products, please visit [www.corelis.com](http://www.corelis.com)

ScanExpress DFT Analyzer™ and ScanExpress TPG™ are trademarks of Corelis Inc.

All other product or service names are the property of their respective owners.

© Copyright Corelis Inc. 2009-2010. All rights reserved.

Corelis Inc., reserves the right to make changes in design or specification at any time and without notice.

20300-DS VERSION 1.1 - 12/17/2010