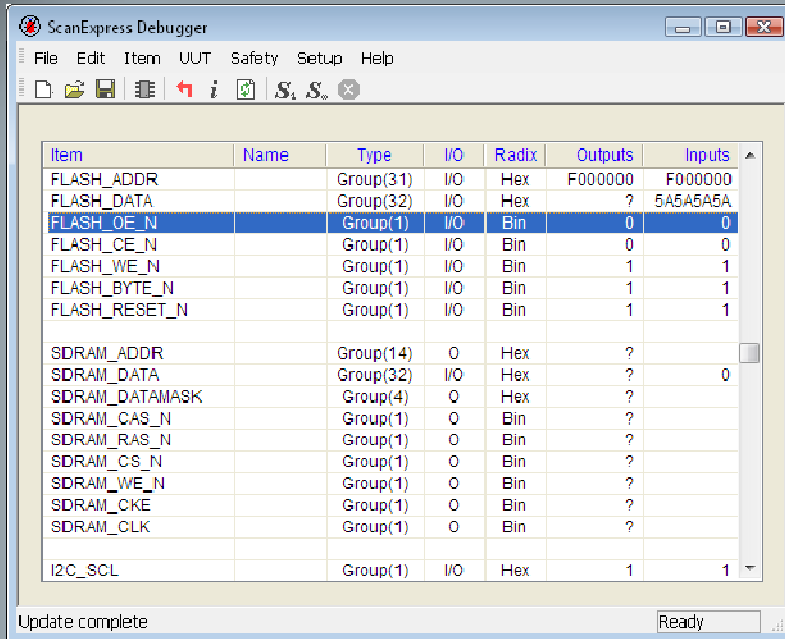


ScanExpress Debugger™

Boundary-Scan Interactive Debugger



Preferred Boundary-Scan Solutions—Acclaimed Technical Support



Features

- Interactive control and observation of all boundary-scan controllable inputs and outputs
- Intuitive software assists with short and open fault identification on and between BGA and other fine-pitch components
- Versatile interface allows data entry and display in binary, decimal, or hexadecimal formats
- Comprehensive pin and net browser with sort and filter capability for easy identification and selection
- Convenient pin grouping based on a design's functionality
- Real-time data checking prevents conflicts and unsafe values
- Powerful JTAG chain fault detection and diagnostics help isolate hardware problems quickly
- Graphical User Interface (GUI) for desktop debug applications
- Interfaces with LabVIEW, LabWindows/CVI, Agilent VEE, Visual Basic, and other third party test executives
- Fully complies with IEEE std 1149.1
- Supports Corelis high-performance JTAG controllers
- Compatible with Windows XP, Windows Vista, and Windows 7

Test probe access is a luxury—modern electronic system design techniques such as blind and buried vias or ball-grid-array (BGA) devices guarantee limited signal access. Test points quickly reduce precious board real-estate and can even degrade performance.

ScanExpress Debugger overcomes these limitations to provide the control and visibility necessary to quickly debug and test hardware, using a simple JTAG port to interface with IEEE-1149.1 compliant devices.

Whether debugging prototype hardware, enhancing production tests with boundary-scan control, or diagnosing a faulty board in the field, ScanExpress Debugger's easy-to-use and versatile interface helps engineers test faster and more efficiently.

Benefits

- **Speed up hardware development** on products with BGA and fine-pitch components that are not accessible with external probes.
- **Decrease test complexity** by utilizing non-intrusive boundary-scan technology for virtual access.

Applications

- **Development** - Debug hardware faults, even on components with no physical access.
- **Production** - Integrate boundary-scan control and test into automated test routines.
- **Service & Repair** - Troubleshoot hard to find faults with just a desktop JTAG controller and a PC.

Learn More: For more information about Corelis products, please visit www.corelis.com

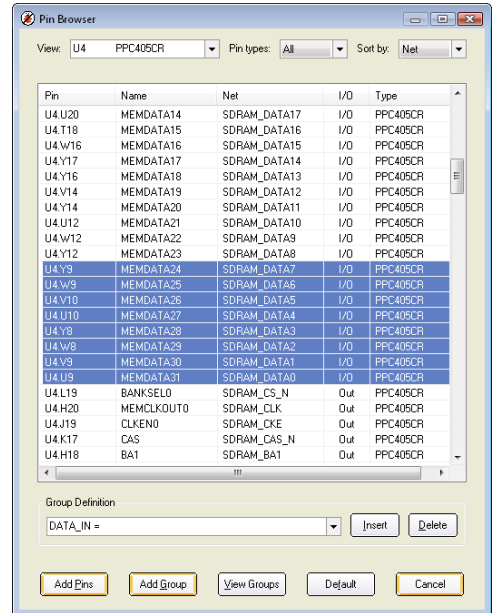
Overview

ScanExpress Debugger is a software application designed to assist engineers with hardware debug during prototype design verification and testing as well facilitate boundary-scan control in both automated and manual test environments. Utilizing a high-performance Corelis JTAG controller along with user-friendly and intuitive Windows-based software and a powerful software API, ScanExpress Debugger can take control of a Unit Under Test (UUT) boundary-scan chain and control board signals. Using only a JTAG hardware interface and board description files, ScanExpress Debugger provides the toolset necessary to control and observe system signals for hardware debug and test—all through the JTAG interface.

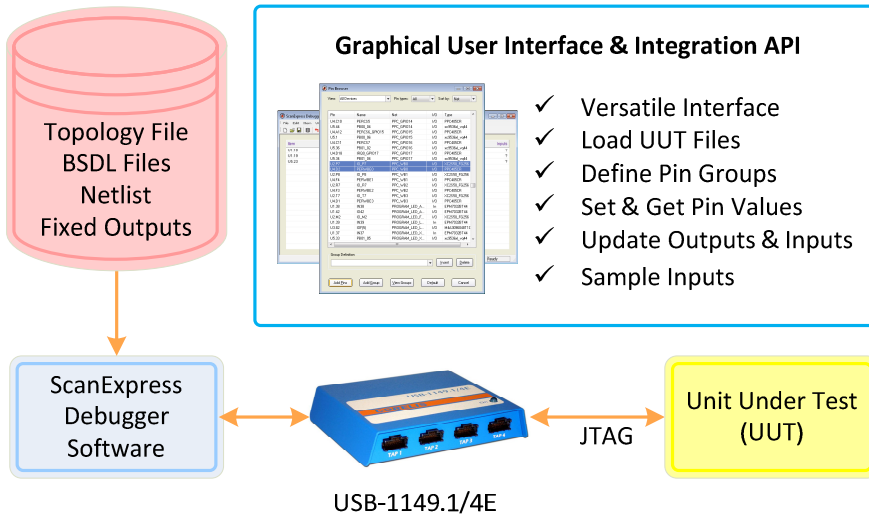
Graphical User Interface

ScanExpress Debugger features an interactive interface with intuitive controls to set and monitor the state of pins or groups of pins on the UUT. The user interface includes features to save and load debug sessions with persistent pin group definitions and UUT configuration options.

Data editing and manipulation is easy—the graphical interface includes common user interface functions such as copy, cut, and paste as well as insertion, deletion, and clearing of data table rows. Additional functions allow resetting or updating of the Unit Under Test, selecting board safety options, enabling continuous sampling mode, and configuring the selected boundary-scan controller.



The Pin Browser displays all nets and pins for easy pin group definition.



ScanExpress Debugger uses a simple JTAG interface to control the UUT.

Application Programming Interface (API)

ScanExpress Debugger includes a DLL interface with powerful JTAG functions that easily integrates into custom user application programs and/or test environments. The DLL enables test developers with the power of boundary-scan access for in-system monitoring and stimulus as well as interfacing with external equipment.

In a typical application the test engineer can configure the digital inputs of a Digital-to-Analog Converter (DAC) connected to boundary-scan devices on board and monitor the output of the DAC—non-intrusively with boundary-scan or externally with an instrument such as a DMM or oscilloscope.

The API can be integrated into C language applications or used with popular test executive systems such as National Instruments LabVIEW, National Instruments TestStand, and Agilent VEE to add boundary-scan control to any test environment.

Ordering Information

Part Number—20409

For more information about Corelis ScanExpress products, please visit our website at <http://www.corelis.com/>

CORELIS

13100 Alondra Blvd.
Cerritos, CA 90703, USA

+1 888-808-2380 (US & Canada)
+1 562-926-6727 (International)
+1 562-404-6196 (Fax)

www.corelis.com