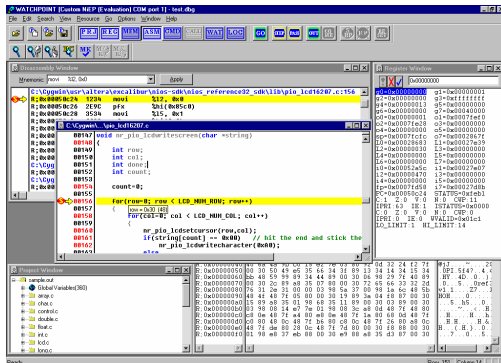




Watchpoint® for NiEP2/3



Watchpoint® for NiEP2/3 is a low cost and high performance debugging monitor which debugs the program running on the evaluation board using Altera Nios® Embedded Processor (Ver. 1.x, 2.x and 3.0)

It also enables the user to evaluate their own board or program easily, and fully supports high-level language debugging.

Main Features

General Features

- Multi-window based user interface
- Advanced GUI Source Level Debugger
- Save/restore the operating environment for each of your projects
- Logging capability provides all command output during debugging session
- Hypertext On-line Help
- Supports C/C++ and Assembly language source files
- Download multiple object and symbol modules
- Unlimited software breakpoints
- View/Modify variable by Watch window
- Supports a wide variety of load module formats

Evaluation Board

Watchpoint® for NiEP2 corresponds to Altera Nios® Evaluation Board .

It enables the user to debug their own board.

Watchpoint is a registered trademark of Sophia Systems Co., Ltd. Nios is a registered trademark of Altera corporation. All brands and product names are trademarks or register trademarks of their respective companies. All configurations are subject to change without notice.

Minimum Requirements

OS: Windows 95/98/Me/NT/2000/XP
Memory 12MB(16MB recommended), Hard Disk 20MB

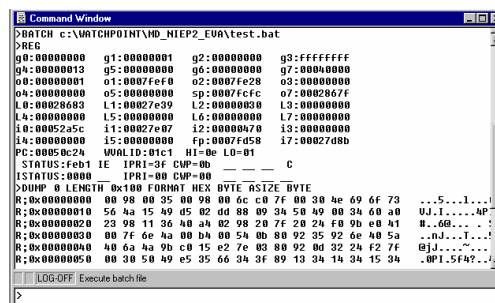
WATCHPOINT windows

• Memory Dump window

- View/Modify a range of data from memory in the specific format
- Supports wide range of data format such as Signed data and Unsigned Integer, Hexadecimal and Real number in byte format
- The data value can be modified directly using the mouse or arrow keys.
- Modified memory data values are displayed in RED.

• Command window

- Enter command line directly from the keyboard or mouse
- The command window output can be logged to a disk file
- The command window can be split into two panes
- Inspect arrays
- Create Batch file, Auto-execute Batch file



Order Information

Product Number: U12440E
Product Name: Watchpoint for NiEP2